

**The performance of FIT  
 to triage symptomatic patients.**

(Clinical evaluation of "HM-JACKarc" analyser)

Josep M<sup>a</sup> Augé Fradera  
 jmauge@clinic.cat

Hospital Clinic - Barcelona  
 Biomedical Diagnostic Center

Biochemistry and Molecular Genetics Department

<http://www.cbclinic.org>

**CLÍNICA BARCELONA**  
 Hospital Universitari

**Heterogeneity of analytical platforms.**

More than 40 manufacturers

WEO Colorectal Cancer Screening Meeting, 2012  
 FIT for Screening - Stephen Halloran

**Heterogeneity of analytical platforms.**

SENTFIT8270 - Sentinel Diagnostics: 10 mg x 20 µg/g, 1.7 mL, 117.6

Kroma IT - Linear: 20 mg x 20 µg/g, 1.6 mL, 250

HM-JACKarc - Kyowa Medex: 2.0 mg x 20 µg/g, 2.0 mL, 20

OC-Sensor DIANA - Eken Chemical: 10 mg x 20 µg/g, 2.0 mL, 100

$$\text{ng/mL} = \frac{\mu\text{g Hb/g faeces} \times \text{mass of faecal sample added (mg)}}{\text{volume of buffer in the sample tube (mL)}}$$

**Apparently similar performances.**

SYMPTOMATIC PATIENTS		SCREENING	
n=686	n=420	n=416	n=70,775
95th percentile: 202 µg/g	95th percentile: 74 µg/g	95th percentile: 108 µg/g	95th percentile: 31 µg/g
Undetectable: 57.0%	Undetectable: 68.6%	Undetectable: 11.5%	Undetectable: 54.1%
≥ 10 <10 µg/g: 16.2%	≥ 10 <10 µg/g: 16.2%	≥ 10 <10 µg/g: 71.5%	≥ 10 <10 µg/g: 36.7%
≥ 20 <20 µg/g: 3.6%	≥ 20 <20 µg/g: 3.6%	≥ 20 <20 µg/g: 5.4%	≥ 20 <20 µg/g: 4.7%
≥ 20 <150 µg/g: 8.0%	≥ 20 <150 µg/g: 8.1%	≥ 20 <150 µg/g: 7.0%	≥ 20 <150 µg/g: 4.7%
≥ 150 µg/g: 5.3%	≥ 150 µg/g: 3.6%	≥ 150 µg/g: 4.6%	≥ 150 µg/g: 1.9%

**Utility of evaluation in symptomatic patients.**

208 symptomatic patients (416 samples)  
 (92 men, 116 women 22 – 86 years old)  
 Two samples from two bowel motions

**2 Colorectal cancer (Stage II and III)**  
**27 High and intermediate risk adenoma**

Prevalence of ACRN  
 Men: 18.5% - Women 10.3% (p=0.088)

**41 Low risk adenoma**

**91 Other lesions**

- Inflammatory and hyperplastic polyps
- Inflammatory bowel disease
- Haemorrhoids
- Angiodysplasia
- Diverticulosis
- Minor/irrelevant

**47 Normal**

**Distribution of the lesions in relation to FIT result.**

208 symptomatic patients (416 samples)  
 (92 men, 116 women 22 – 86 years old)  
 Two samples from two bowel motions

**2 Colorectal cancer (Stage II and III)**  
**27 High and intermediate risk adenoma**

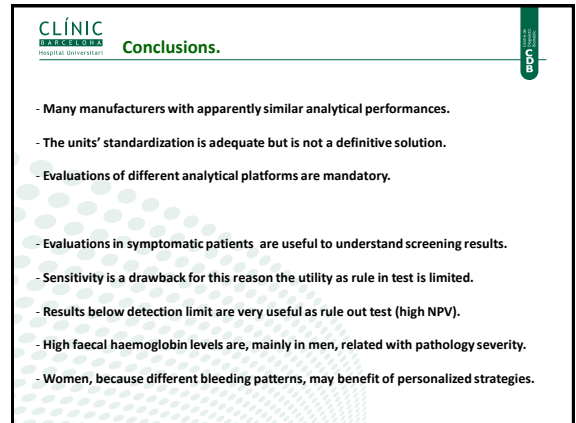
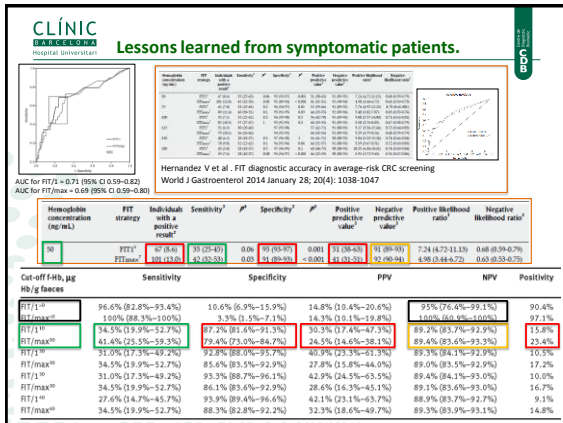
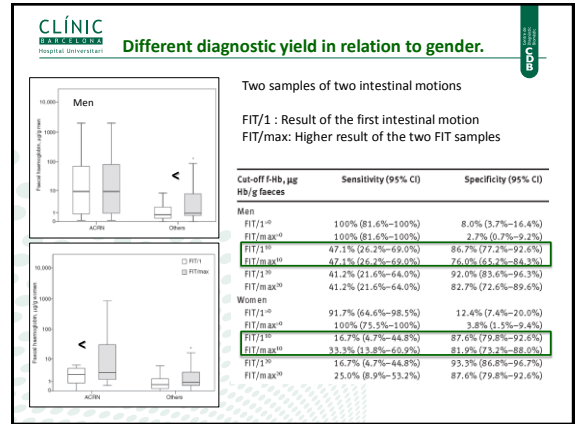
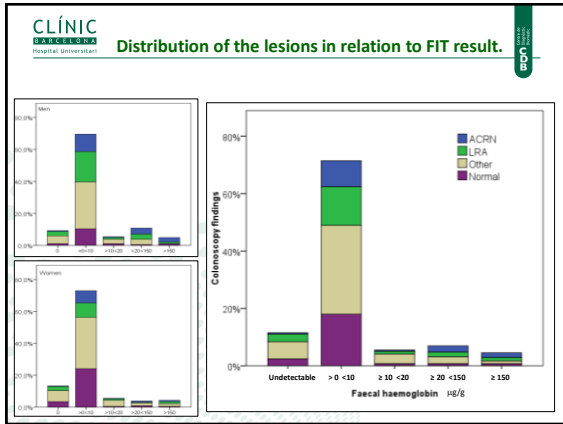
Prevalence of ACRN  
 Men: 18.5% - Women 10.3% (p=0.088)


**41 Low risk adenoma**

**91 Other lesions**

- Inflammatory and hyperplastic polyps
- Inflammatory bowel disease
- Haemorrhoids
- Angiodysplasia
- Diverticulosis
- Minor/irrelevant

**47 Normal**






**CDIB**

Josep M<sup>a</sup> Augé Fradera  
jmauge@clinic.cat

Hospital Clinic - Barcelona  
Biomedical Diagnostic Center

Biochemistry and Molecular Genetics Department

<http://www.cdclinic.org>



**CLÍNICA BARCELONA**  
Hospital Universitari