



WEO

The voice of world
endoscopy

Reducing the footprint of CRC screening

Iris Serie

Programme Manager Dutch CRC Screening (RIVM)



Agenda

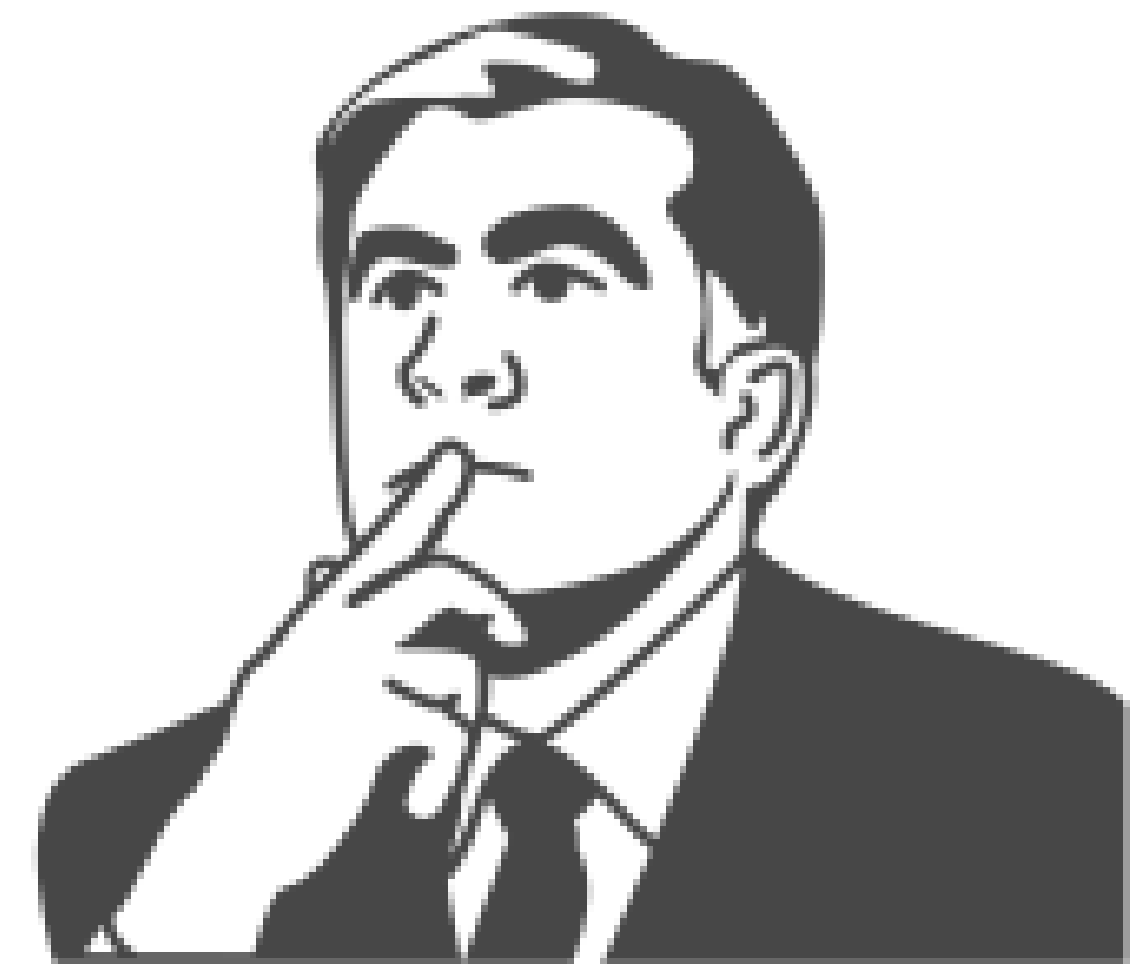
Inspire you to reduce the footprint of your work and share our challenges in doing so



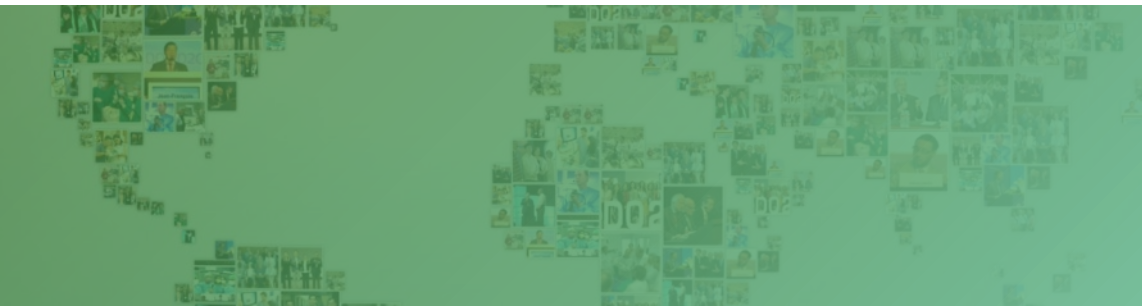
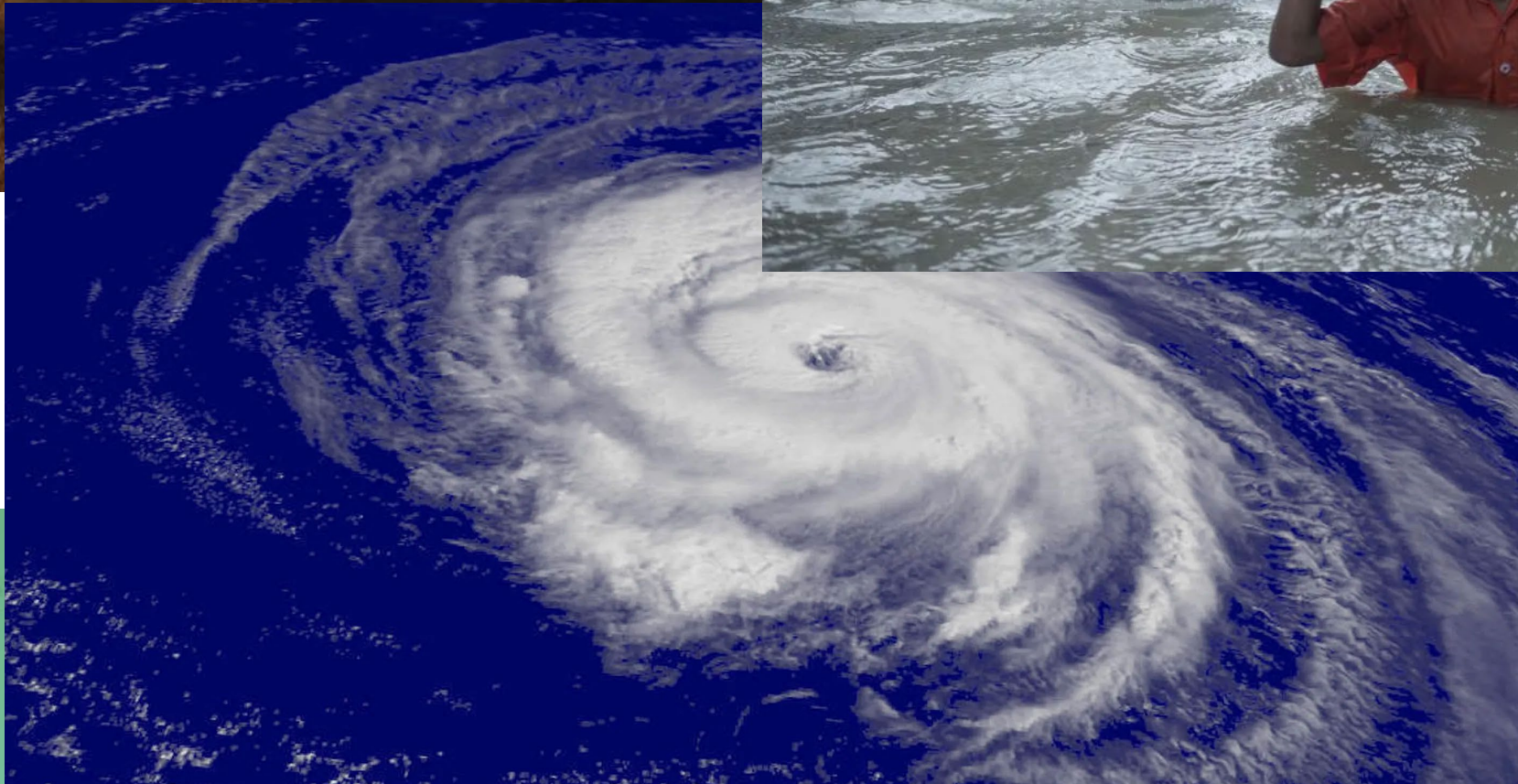
Agenda

Inspire you to reduce the footprint of your work

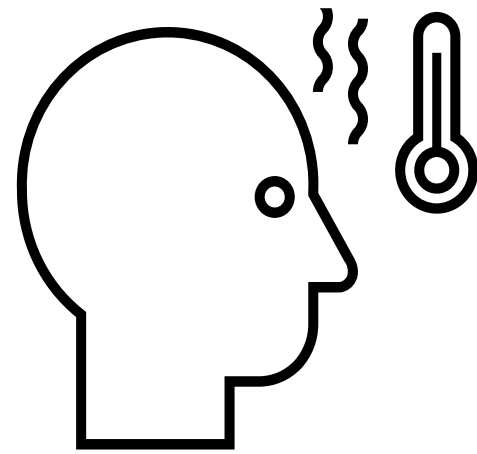
What does this have to do with CRC screening?



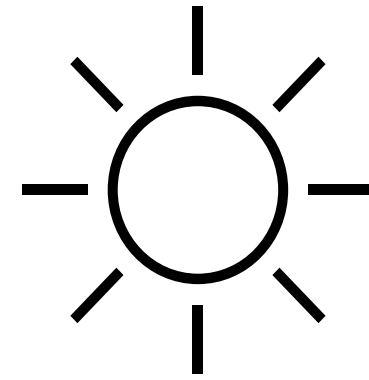
Climate crisis



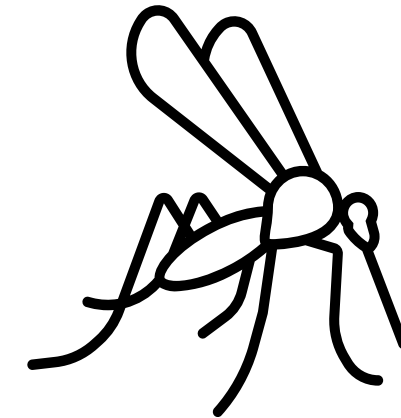
Climate crisis = a health crisis



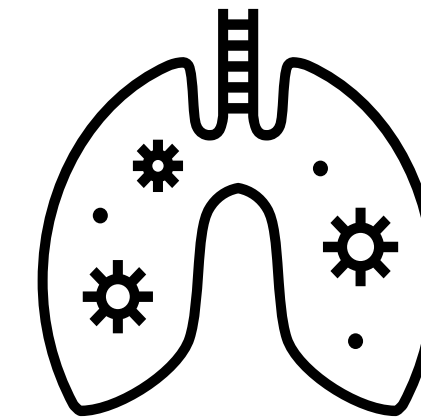
Heat stress



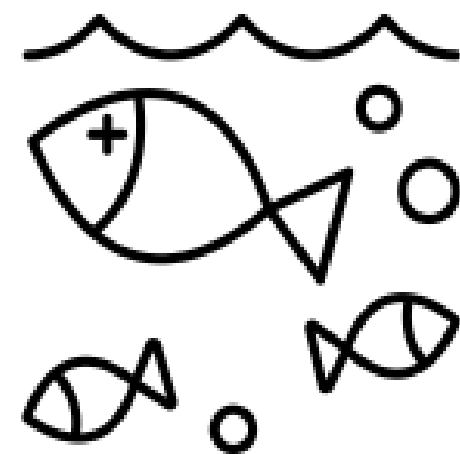
UV-light



Infection disease



Air pollution



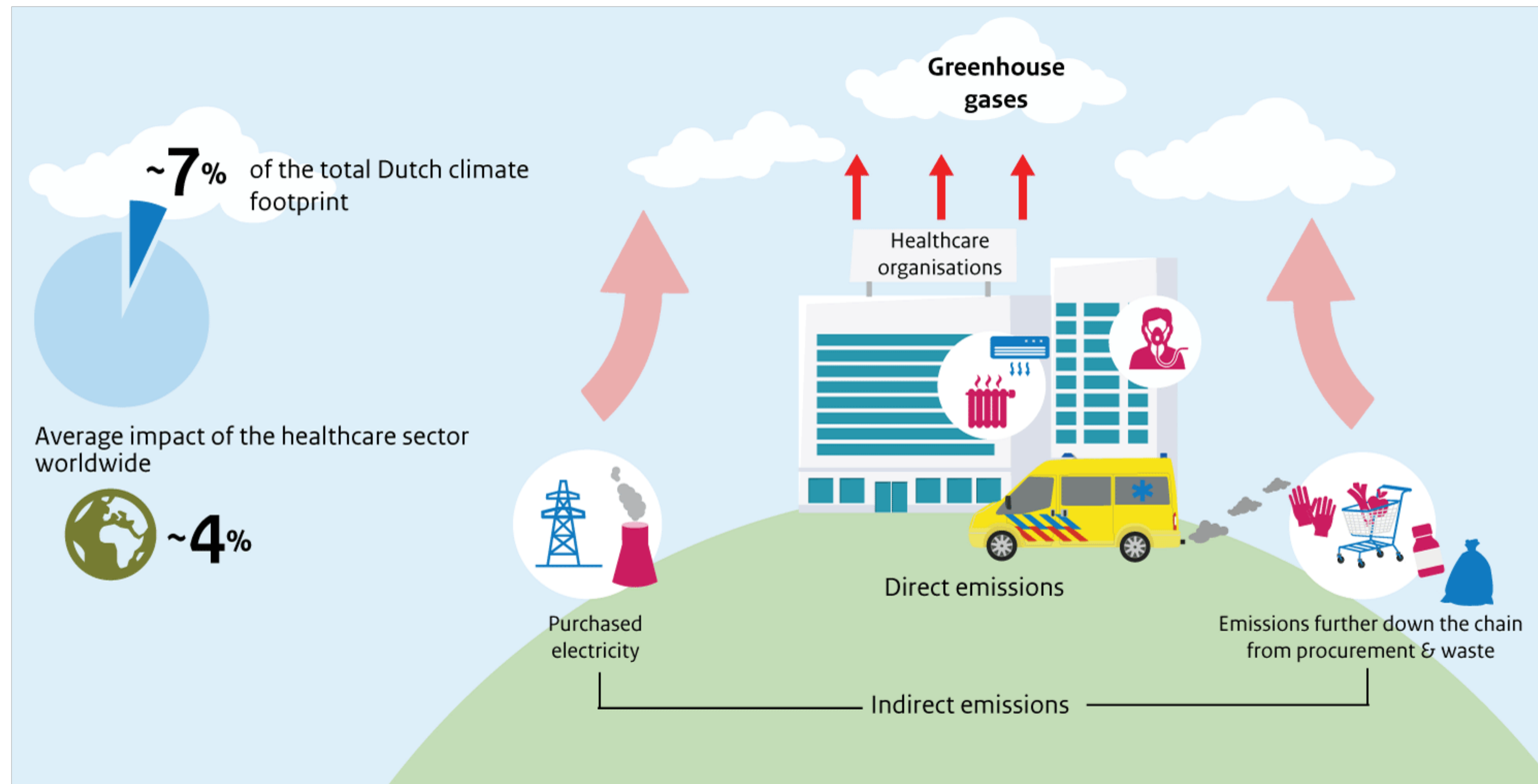
Water pollution




malnutrition



Paradox: health industry co-created climate crisis

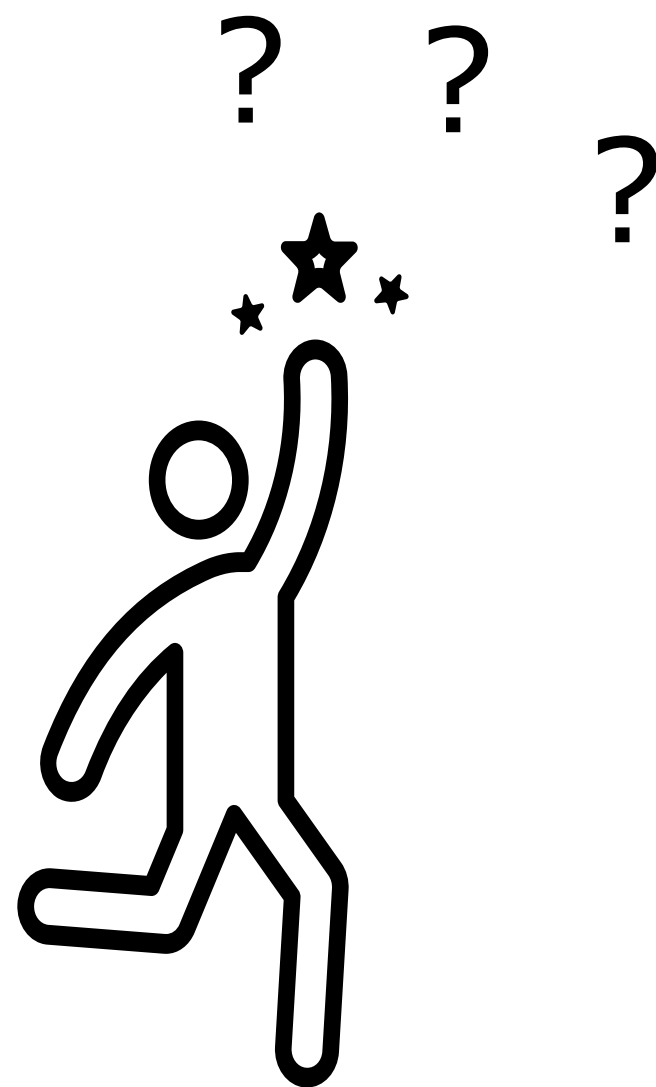


Paradox: health industry co-created climate crisis

Endoscopy department 
third most polluting hospital department
(after ICU and OR)



Where do you start?



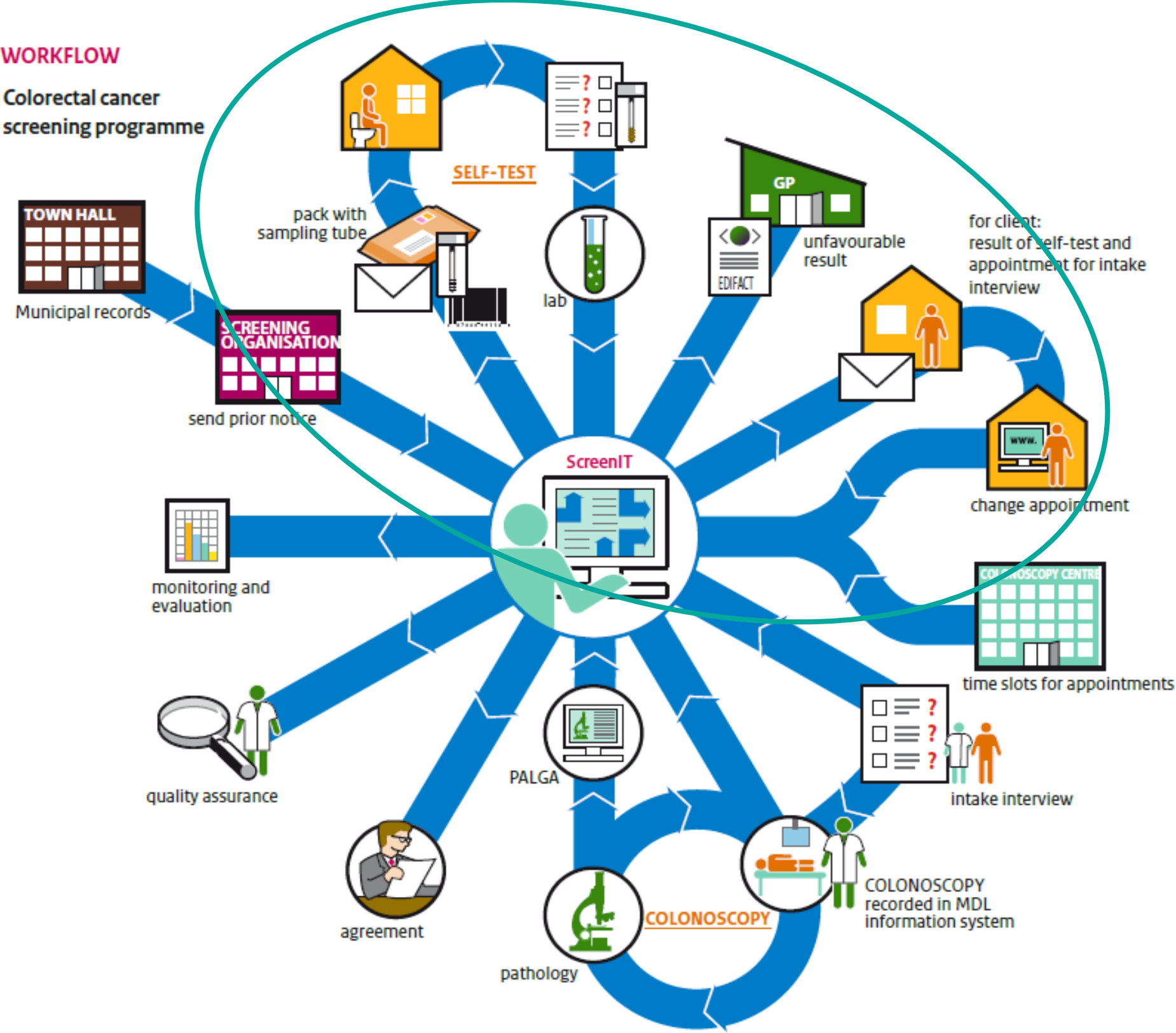
Investigate



Start projects



Insight investigation footprint Dutch CRC programme



Impact Category	Labs	Letters	Package	Total
Global Warming Potential (GWP in t CO ₂ eq.)	0.85%	6.69%	92.45%	676
Land use (ha crop eq.)	0.14%	26.43%	73.43%	7.29
Cumulative Energy Demand (CED in GJ)	0.66%	9.18%	90.16%	11 447

- To compare: the programme equals the CO₂ emission of 34 Dutch households
- Define 'hot spots'

Source: Consultancy Project, Energy Science UU - LCA CRC screening



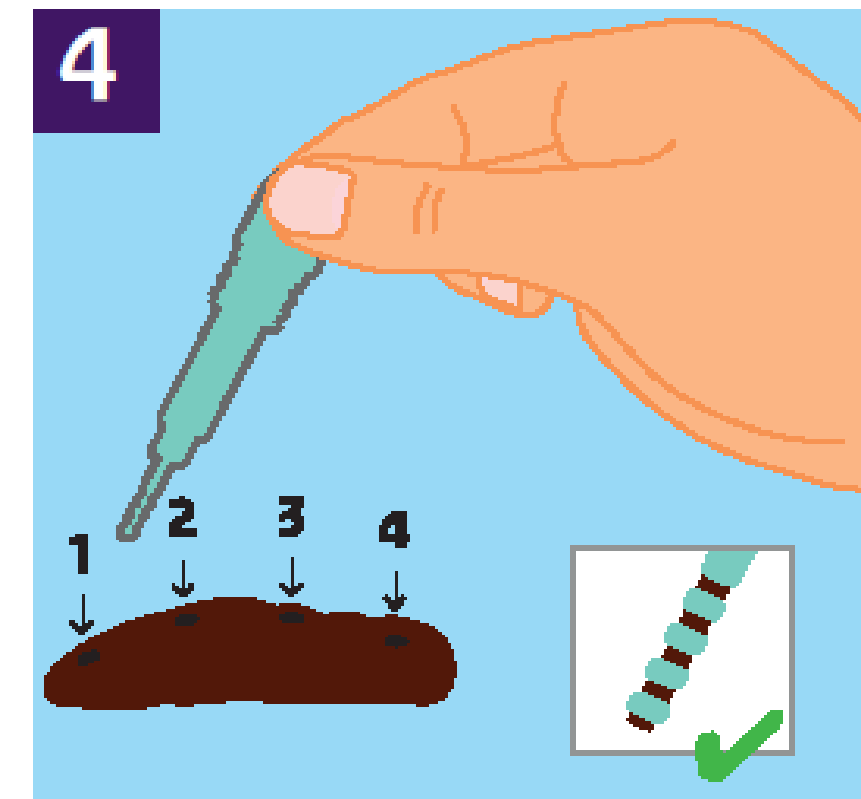


Hot spots: plastic and paper invitation
Not: transport



Projects to reduce environmental footprint

- Improve package:
 - Use recycled/recyclable plastic and paper
 - Improve manual FIT-test (less waste)
- Reduce paper and plastic:
 - Send smaller return envelop
 - Investigate smaller invitation when joined round before
 - Non-respondent project



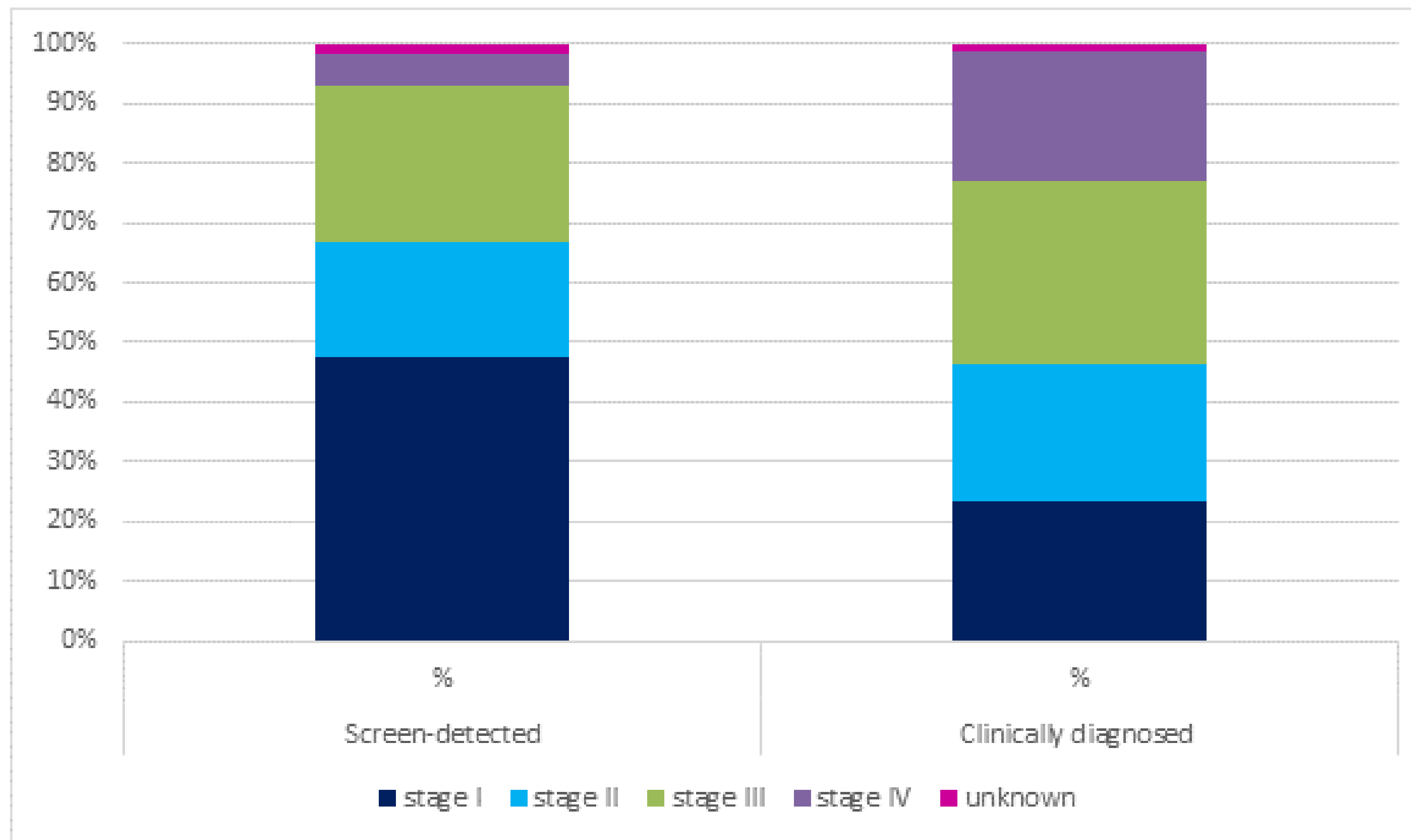
Non-respondents project

Invitees who didn't respond to the invitation twice,
will only receive a paper invitation letter in the third round

	2020 Q3+Q4	2021
Participation		
Total participation	73,0%	70,6%
Participation non-respondents	9,9%	4,9%
Yield		
Total CRC	4,6%	4,5%
CRC non-participants	8,7%	6,2%
Total AAD	26,6%	27,0%
AAD non-participants	37,8%	38,0%
Savings		
Saved costs	-	€750.000
Saved plastic	-	8700 kg
Saved paper	-	5000 kg



Larger ecological footprint later on?

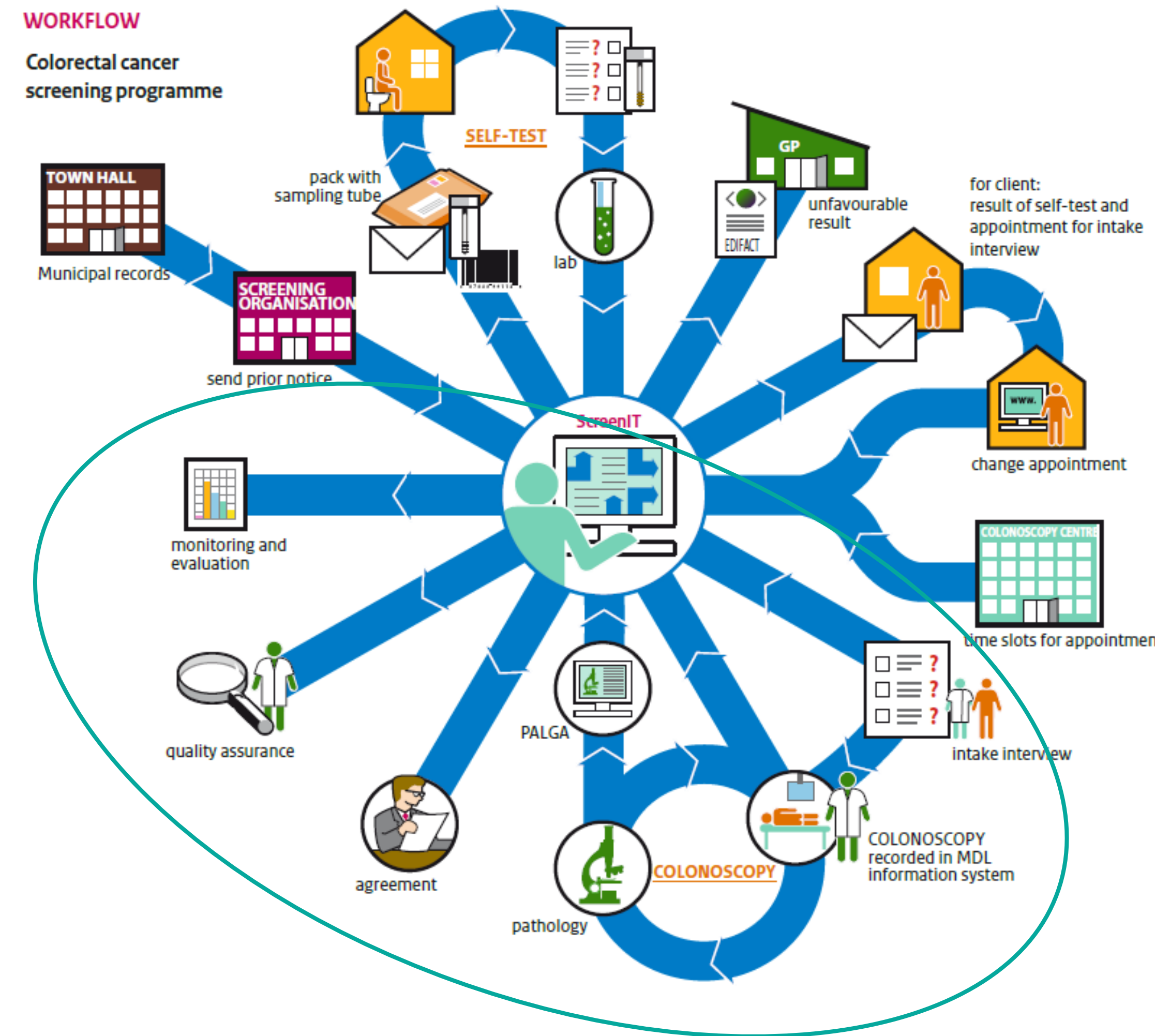


Source: Breekveld et al.



Discussion

- Accessibility vs. sustainability
- Impact non-respondents further down line?
- Client responsibility?
(has to separate plastic/unsubscribe)
- Targeting non-respondents differently?
- Can we focus on other areas?



You can also reduce your footprint





Questions? Ideas? Shared experiences?



Iris.Seriese@rivm.nl



<https://www.rivm.nl/en/colorectal-cancer-screening-programme>



WEO

World Endoscopy
Organization

