



WEO

The voice of world
endoscopy

Participation during the Corvid pandemic

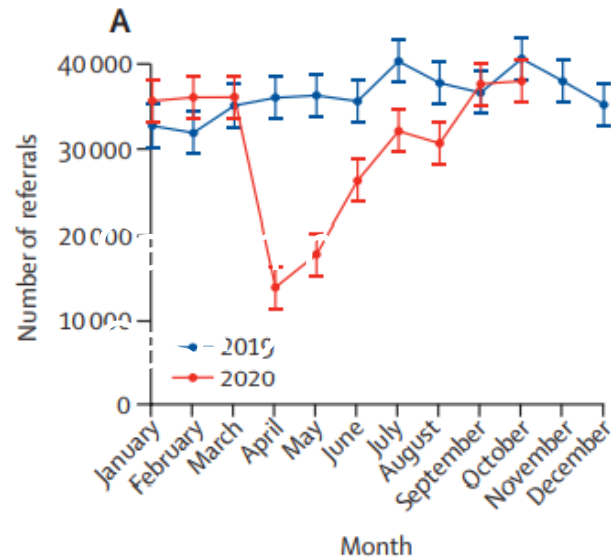
Morten Rasmussen Ph.D

Chief at the Colorectal screening in the Capital Region of Demark

Chairman The Danish Colorectal Screening Database



Diagnosed and treatment during corvid 19 in England



Monthly numbers of referred

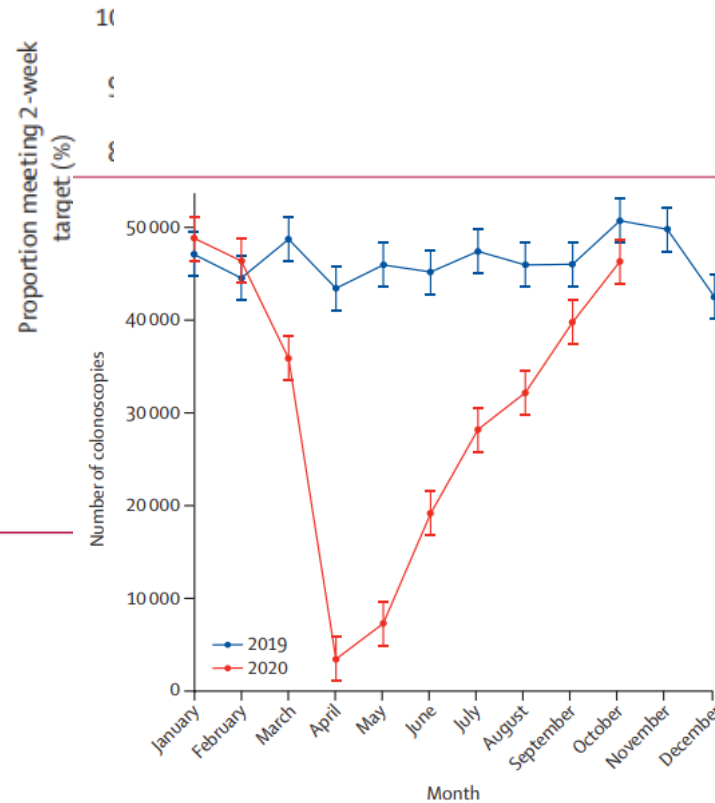
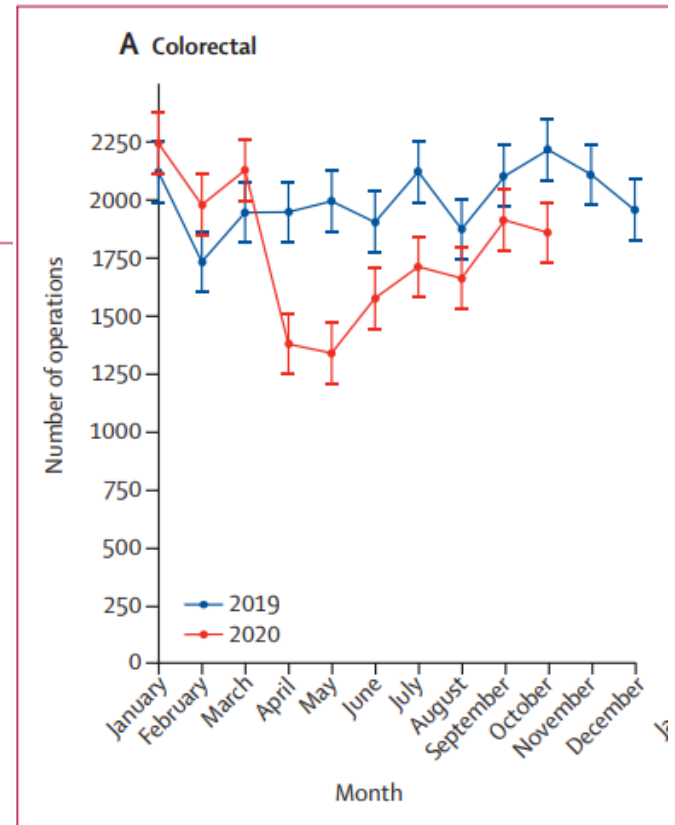


Figure 2: Monthly number of colonoscopies undertaken in England



Morris Lancet Gastroenterol Hepatol 2021



Corvid 19 impact on CRC Screening

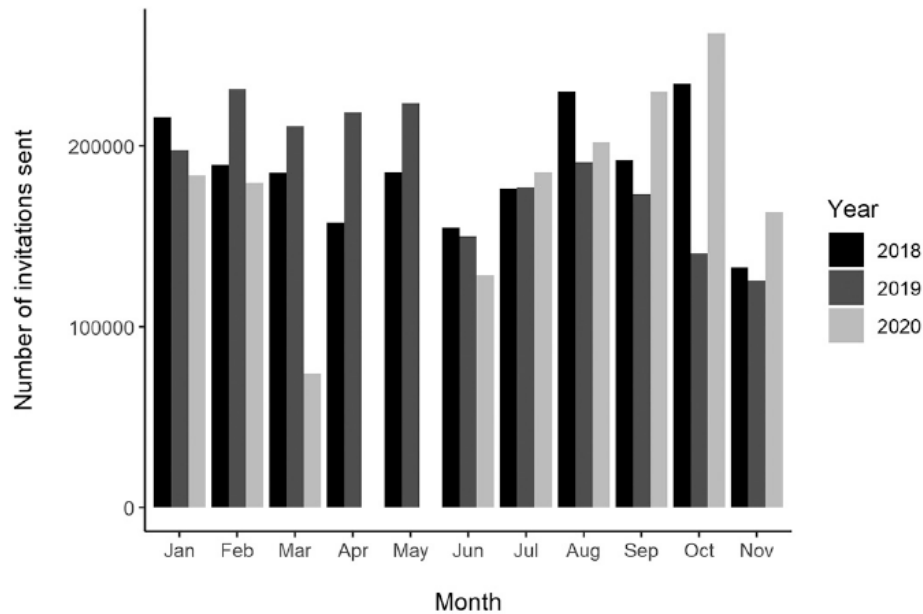
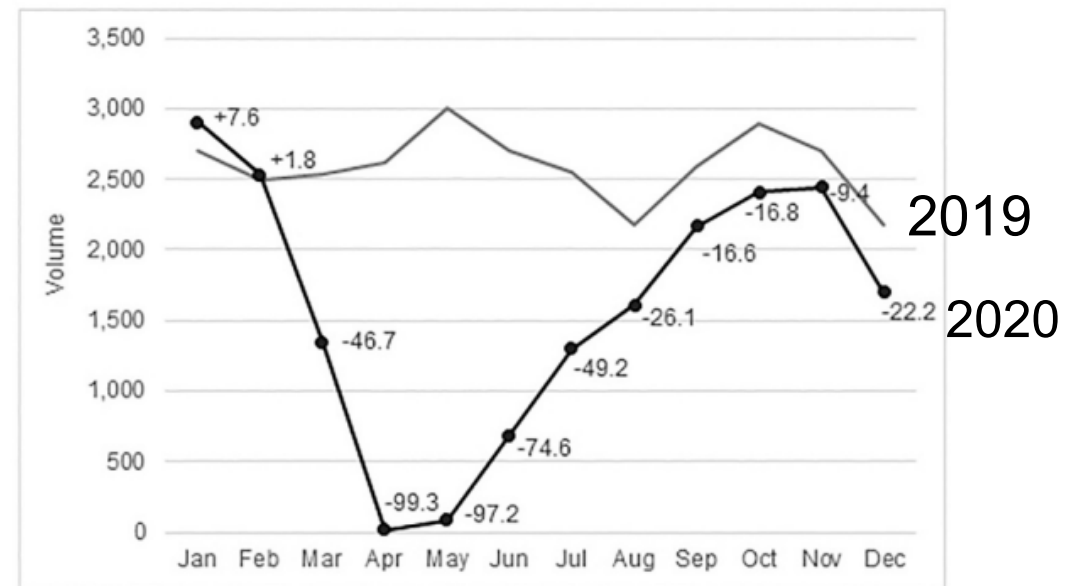


Fig. 3. Monthly number of invitations for FIT screening sent in the Dutch CRC screening program in 2018, 2019, and 2020.

Kortlever Preventive Medicine 2021

Increased Risk CCC (colonoscopy)



Ontario Canada

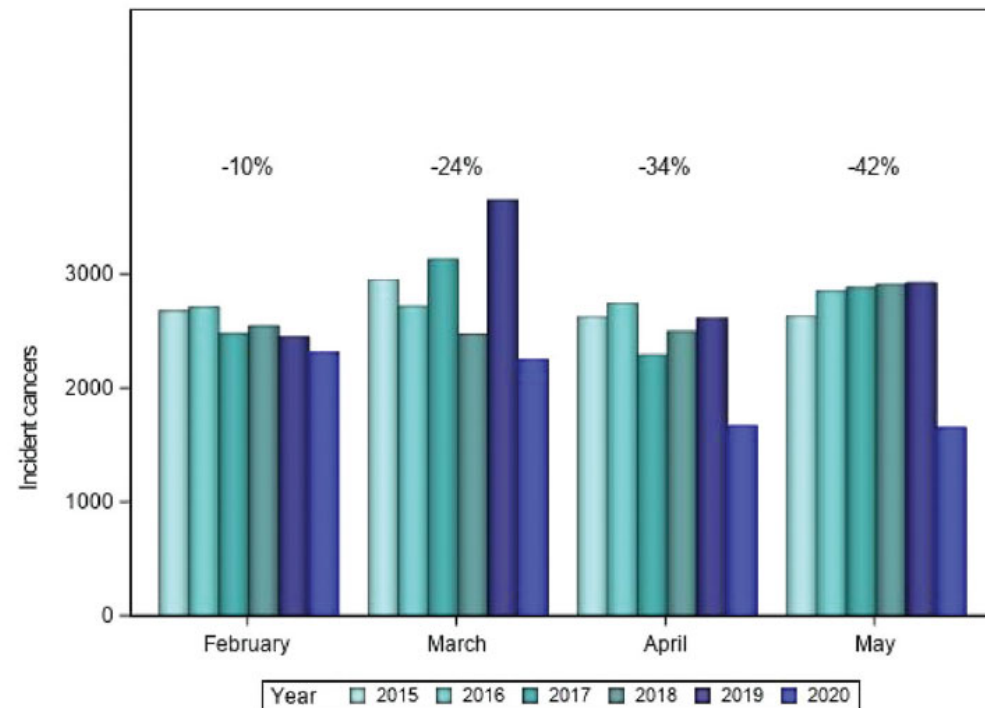
Walker Preventive Medicine 2021



Incident cancer diagnosed in Denmark before and after Corvid 19

Reduction in coloncancer incidence during March-May 2020: 43%

Estimated numbers undected colon cancer March-May 2020: 325



Skovlund Acta oncologica 2021



National Danish colorectal screening program

Started 2014

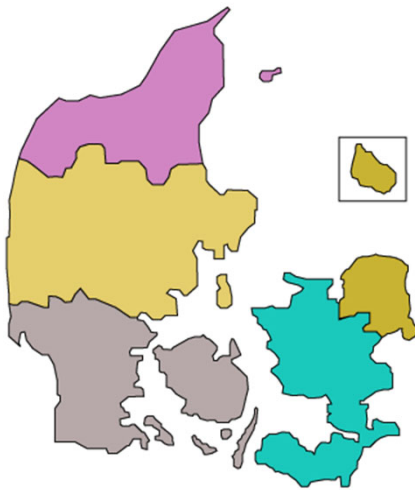
All inhabitants between 50 and 75 years of aged

First screenings round 2014-2017

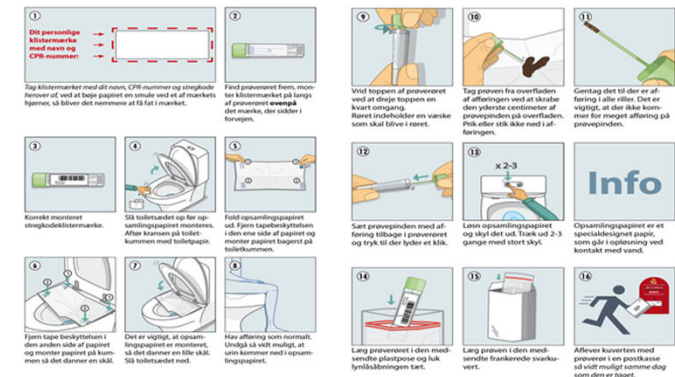
From 2018 biannually screenings invitation

FIT test OC-Sensor cut off 100 ng hb/ml

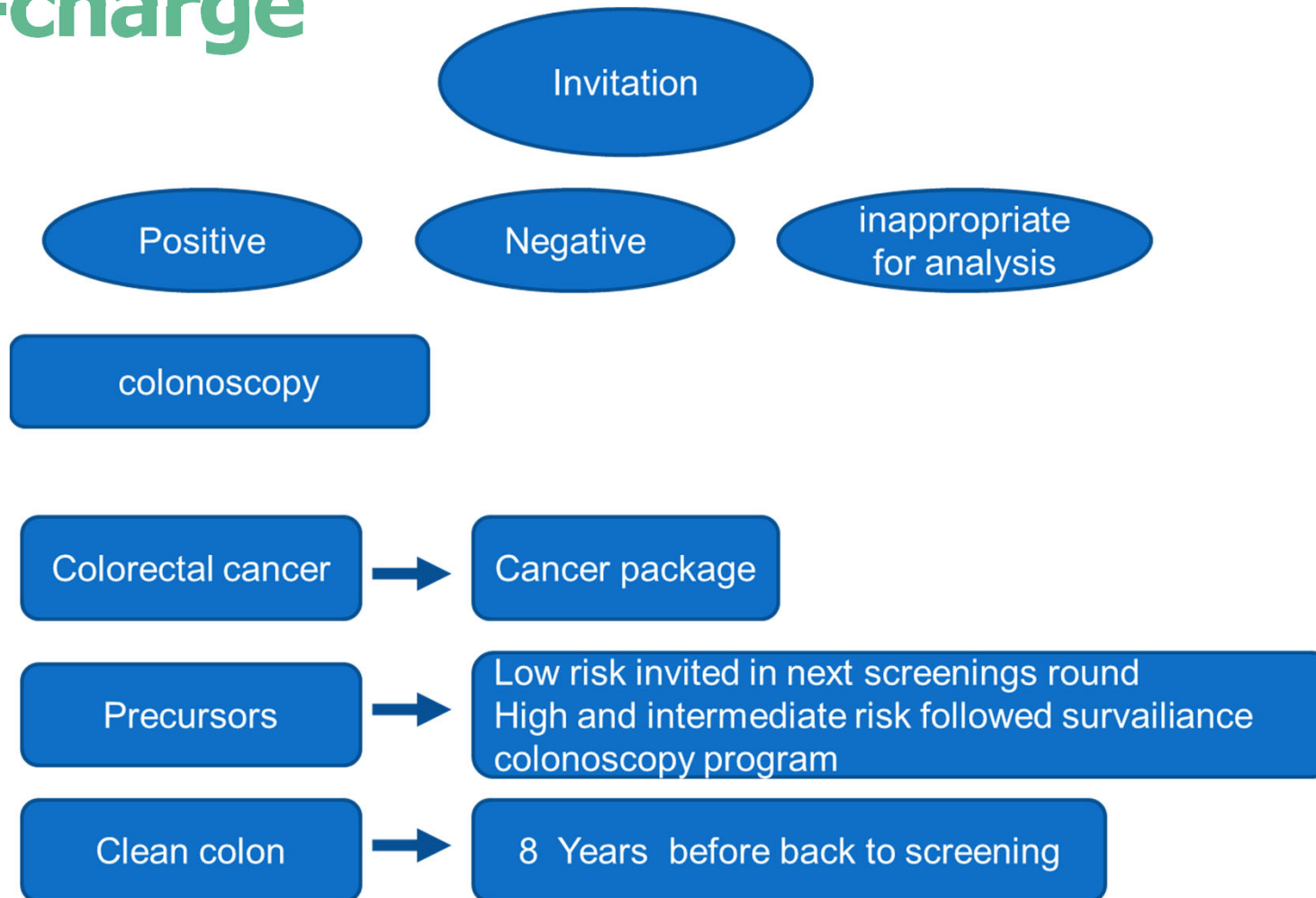
Positive FIT test followed by a colonoscopy



5.831 million inhabitants



Flow-charge



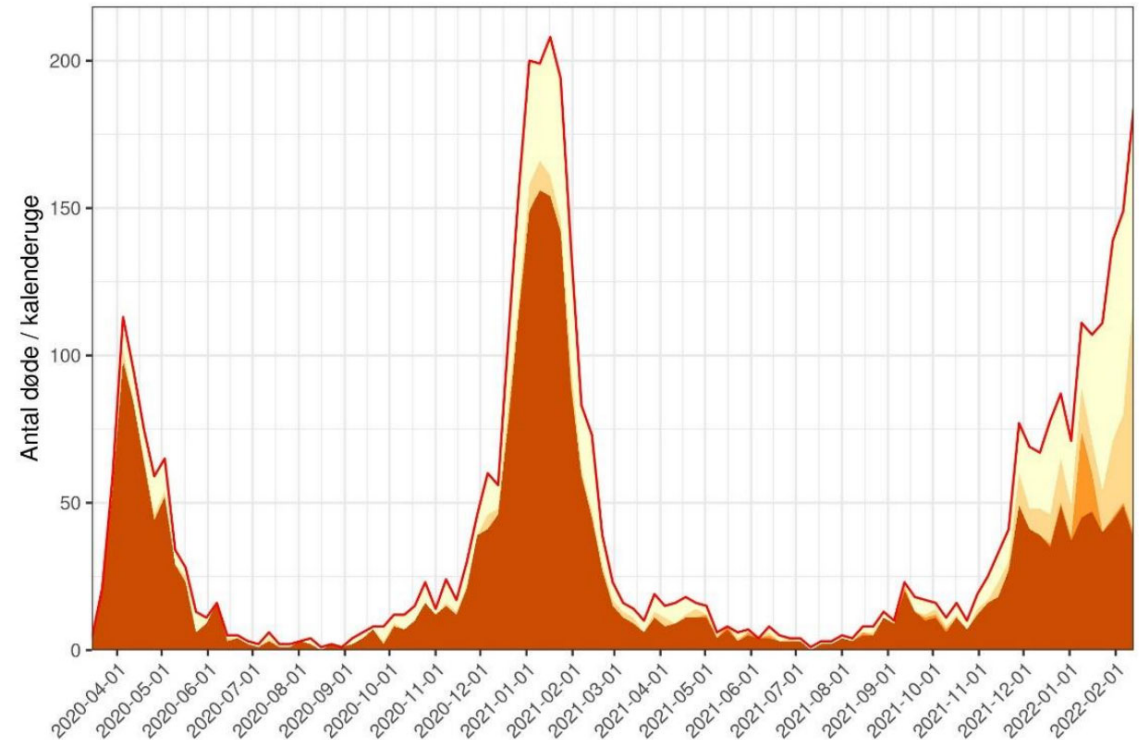
Dianostic yield of CRC

| | 2014-2017 | 2018 | 2019 | 2020 | 2021 |
|---------------|-----------|--------|--------|--------|--------|
| CRC | 4.449 | 1.023 | 990 | 721 | 836 |
| Colonoscopies | 74.843 | 23.946 | 23.667 | 20.974 | 20.801 |
| % | 5.9 | 4.3 | 4.2 | 3.4 | 4.0 |
| NNS | 17 | 23 | 24 | 29 | 25 |



Corvid 19 Pandemic in Denmark

- Pre-pandemic period: 1 January 2018 to 31 January 2020
- Pre-lockdown period: 1st February to 10 March 2020
- 1st lockdown: 11 March to 15 April 2020
- 1st re-opening: 16 April to 15 December 2020
- 2nd lockdown: 16 December 2020 to 27 February 2021
- 2nd re-opening: 28 February 2021 to 30 September 2021 (end of inclusion period)



Death with corvid 19 per week

Pre-lockdown and 1st lockdown was termed “the start of the pandemic” in this study.

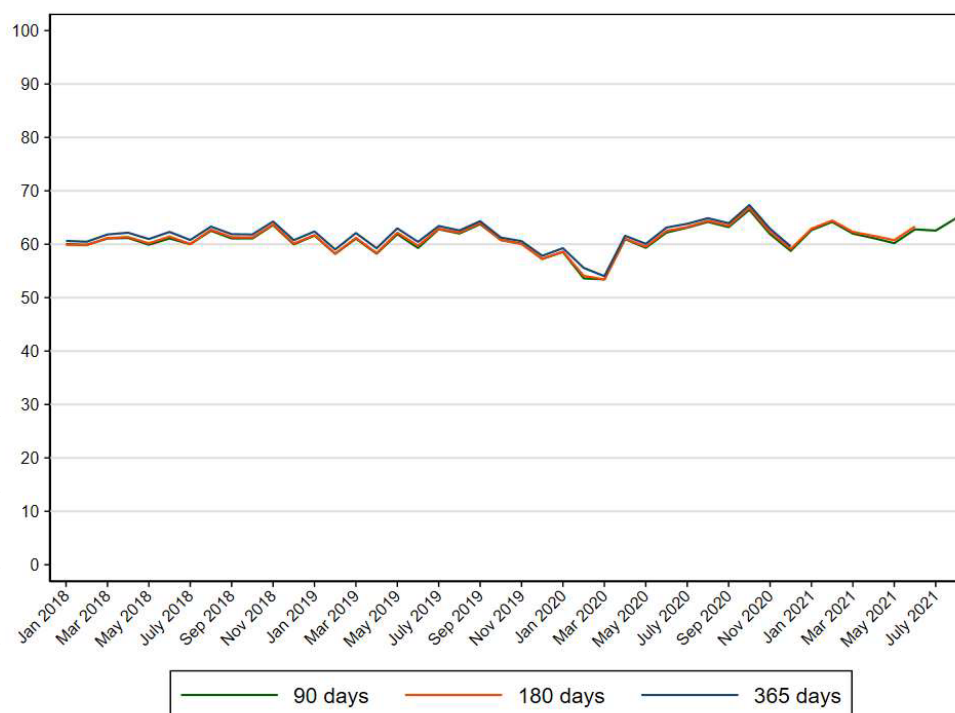


Participation during corvid in Denmark

Figure 1. Participation in colorectal cancer screening (%) in Denmark within 90, 180 and 365 days since invitation from 2018 to 2021

Study period 2018-2021
3.133.947 invitations sent out
1.928.725 individuals
94.373 positive test

| Paticipation rate | % |
|--------------------------|------|
| Before pandemic | 60.7 |
| Pre-lockdown | 54.9 |
| 1 st lockdown | 53.0 |
| Rest of Pandemic | 64.9 |

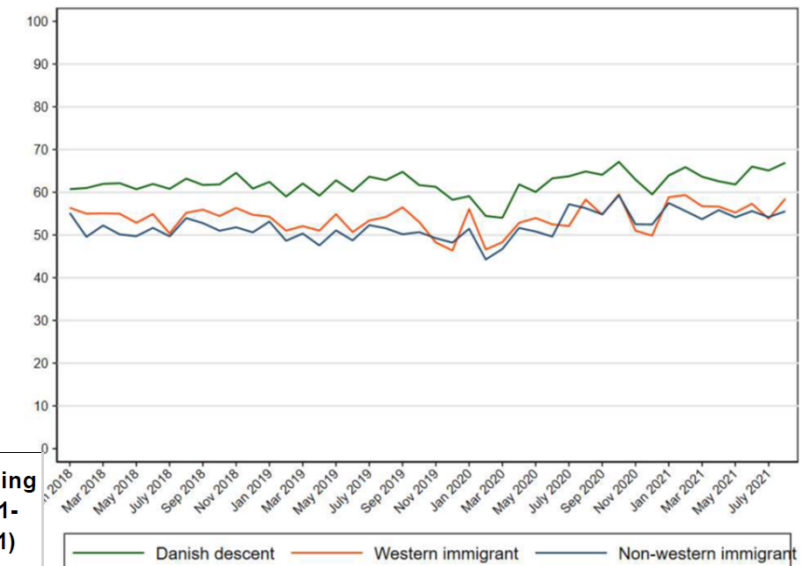


Bech Olesen in press



Participation due to Ethnicity

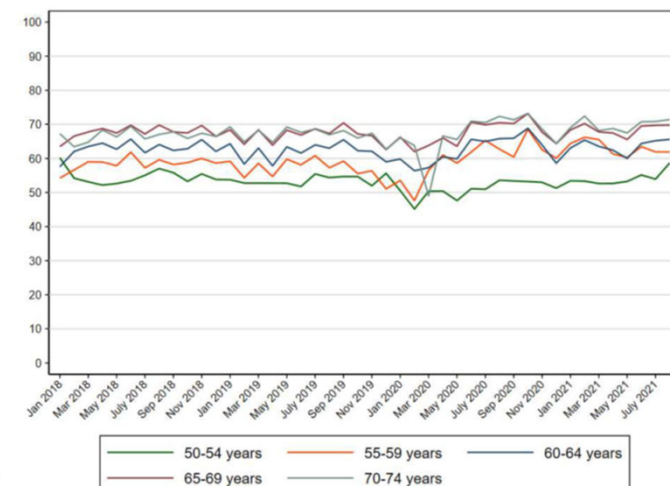
| | Pre-pandemic (01Jan2018- 31Jan2020) | Pre-lockdown (01Feb2020- 10Mar2020) | 1st lockdown (11Mar2020- 15Apr2020) | 1st re-opening (16Apr2020- 15Dec2020) | 2nd lockdown (16Dec2020- 27Feb2021) | 2nd re-opening (28Feb2021- 30Sep2021) |
|-------------------------|---|---|---|---|---|---|
| Ethnicity | % | % | % | % | % | % |
| Danish descent | 61.6 | 55.7 | 53.5 | 63.2 | 64.3 | 66.8 |
| Descendant of immigrant | 54.5 | 50.3 | 44.6 | 56.9 | 58.1 | 60.8 |
| Western Immigrant | 53.5 | 47.6 | 47.6 | 54.2 | 57.9 | 59.3 |
| Non-western immigrant | 50.8 | 45.5 | 47.1 | 54.1 | 56.2 | 57.9 |



Bech Olesen in press



Participation according to age

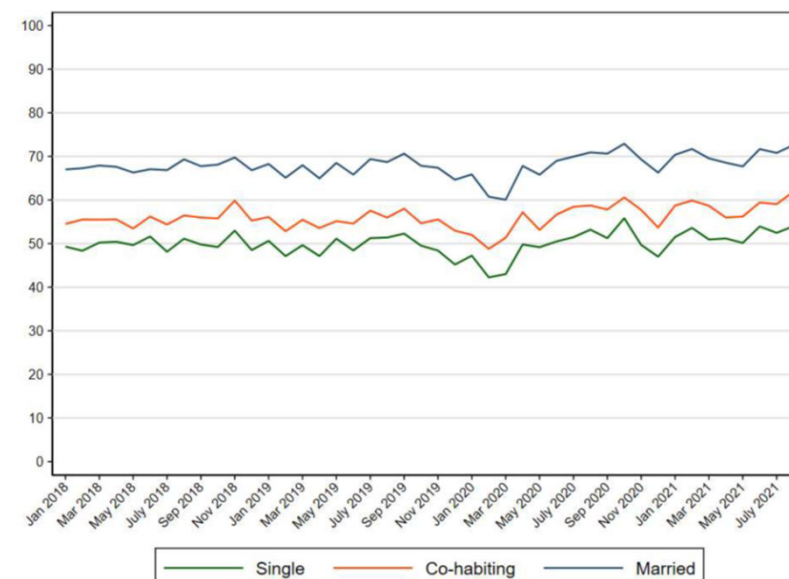


| | Pre-pandemic (01Jan2018- 31Jan2020) | Pre-lockdown (01Feb2020- 10Mar2020) | 1st lockdown (11Mar2020- 15Apr2020) | 1st re-opening (16Apr2020- 15Dec2020) | 2nd lockdown (16Dec2020- 27Feb2021) | 2nd re-opening (28Feb2021- 30Sep2021) |
|--------------------------|---|---|---|---|---|---|
| | % | % | % | % | % | % |
| Total | 60.7 | 54.9 | 53.0 | 62.4 | 63.0 | 64.9 |
| Age at invitation | | | | | | |
| 50-54 years | 54.3 | 45.2 | 56.0 | 51.8 | 53.2 | 56.7 |
| 55-59 years | 57.2 | 50.2 | 60.1 | 62.3 | 64.7 | 64.4 |
| 60-64 years | 62.2 | 56.6 | 61.6 | 63.9 | 63.9 | 66.0 |
| 65-69 years | 67.2 | 62.7 | 64.7 | 68.5 | 69.0 | 70.8 |
| 70-74 years | 66.7 | 65.0 | 47.2 | 69.6 | 69.9 | 72.3 |

Bech Olesen in press



Cohabitations status

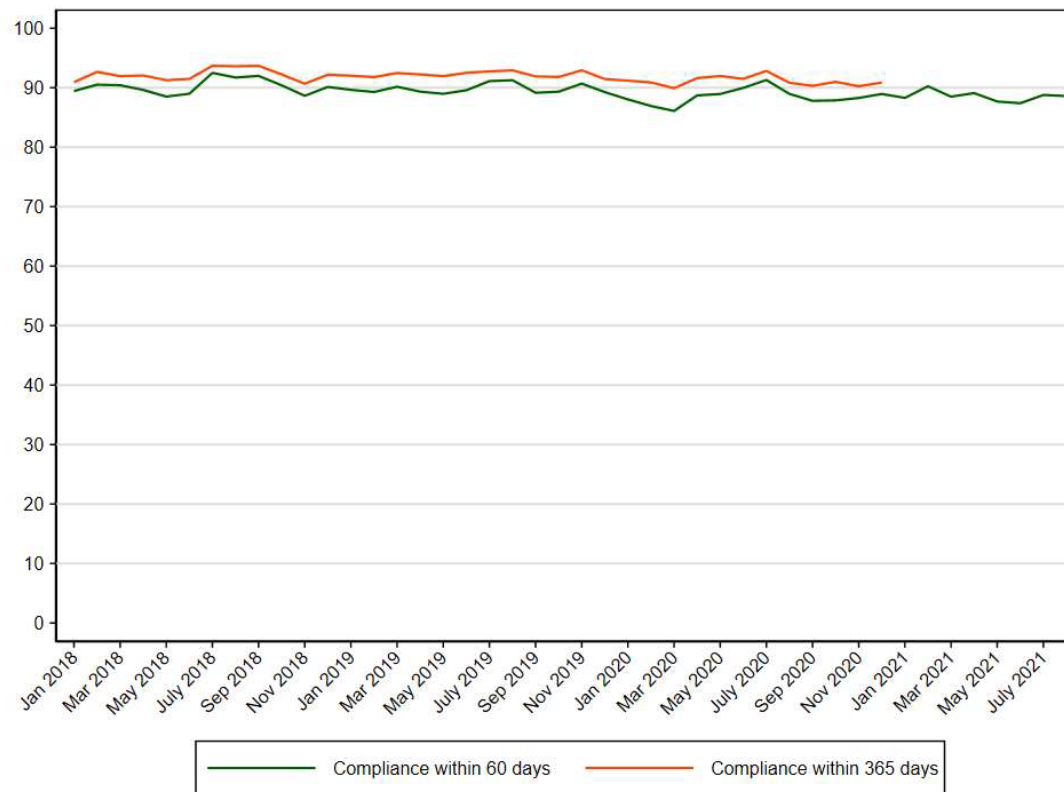


| | Pre-pandemic (01Jan2018- 31Jan2020) | Pre-lockdown (01Feb2020- 10Mar2020) | 1st lockdown (11Mar2020- 15Apr2020) | 1st re-opening (16Apr2020- 15Dec2020) | 2nd lockdown (16Dec2020- 27Feb2021) | 2nd re-opening (28Feb2021- 30Sep2021) |
|----------------------------|---|---|---|---|---|---|
| Cohabitation status | % | % | % | % | % | % |
| Single | 49.5 | 43.6 | 43.0 | 51.1 | 51.8 | 54.8 |
| Co-habiting/co-living | 55.3 | 49.9 | 52.9 | 57.2 | 58.8 | 61.1 |
| Married/registered partner | 67.5 | 62.0 | 59.3 | 69.4 | 70.6 | 72.4 |



Compliance to colonoscopy

Figure 2. Compliance with colonoscopy (%) within 60 and 365 days since a positive FIT test from colorectal cancer screening in Denmark from 2018-2021



Bech Olesen in press



Conclusions:

- Participation was only decreasing in the start of corvid epidemic and even increasing in the end of the epidemic
- Compliance to colonoscopy was only slightly affected by the corvid epidemic
- Subgroups with low participation in FIT screening seems to increase the participation rate even more during the corvid epidemic



Co-workers:

Tine Bech Oleson

Henry Jensen

Berit Andersen

Henrik Møller

Jens Winther Jensen



WEO

World Endoscopy
Organization

